



marine

PowerSports

THE SOUND EXPERIENCE

www.hertzaudiovideo.com



HERTZ

The Sound Experience

HERTZ

**CRUISING OR MOTOR RIDING? EITHER WAY,
HERTZ MARINE AND POWERSPORTS WILL BE THE
SOUNDTRACK OF YOUR ADVENTURES!**



marine





Powersports



For 20 years, Hertz has created high-performance speakers and amplifiers for the 12 V industry, receiving innumerable awards for its outstanding track record of world-class products. To satisfy our fans who love to be **surrounded by nature**, Hertz has launched the **Marine and Powersports lines**, bringing the **'Hertz Sound Experience'** to their open water and off-road outings.

The Sound Experience



marine *PowerSports*

The Sound Experience

**HERTZ MARINE AND POWERSPORTS ARE NATURE-PROOF,
BEING ENGINEERED AND TESTED FOR THE REAL
APPLICATION (UV, SALT-FOG, VIBRATIONS, HIGH/LOW
TEMPERATURE, THERMAL SHOCK, DUST), ACHIEVING
TOP LEVEL PERFORMANCE.**





COAX

The 6.5" hi-performance coaxial speakers are optimized to perform in infinite baffle, with a solid bass and an outstanding output. They are available in Marine **HMX 6.5** or Powersports version **HMX 6.5 S**, both with RGB LEDs lighting option (**HMX 6.5 LD – HMX 6.5 S-LD**).

The 8" coaxials, available in Marine **HMX 8** and Powersports version **HMX 8 S**, are **dedicated to our fans in search of unlimited emotions**, thanks to improved low-frequency extension, dynamics and greater overall output. Powersports version is also available with RGB LEDs lighting option (**HMX 8 S-LD**).

SUB

The **HMS 10 B** long throw 10" subwoofer relieves the main speakers from the hard work of reproducing the lowest frequency range, **adding bass output and punch to maximize the overall system performance**.

AMP

HCP MX Marine amplifiers, available in two (**HCP 2MX**) and four channels (**HCP 4M**) versions, are ready to face the open water, **providing tons of clean power**.

Dedicated to Powersports, Motorcycle and Marine, **HMP amplifiers** offer an **incredible power/size ratio**, both in the four channels (**HMP 4D**) and mono (**HMP 1D**) versions.



HMX COAXIALS ARE ENGINEERED TO WITHSTAND THE REAL ENVIRONMENT OF APPLICATION.

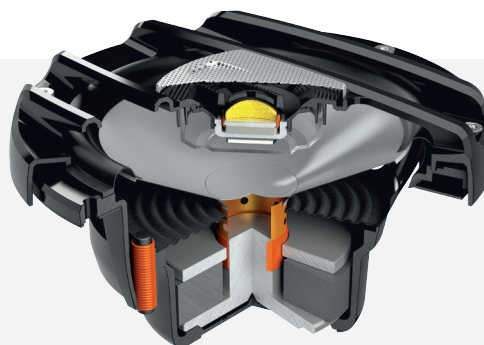
ASA plastic grills and polypropylene cone with co-molded Santoprene surround provide UV resistance according to ASTM-D4329 standards. Aramid fiber spider with silicone-insulated leadwire ensures durability and constant performance over time. Parts and assembly methods are designed to meet high-humidity marine environments (ASTM-B117 & IPX5).



HMX 6.5



HMX 6.5 S



HMX 6.5 S-LD

HMX LED LIGHTING

HMX coaxials are available with RGB LEDs option (LD) featuring a lighting circuit integrated below the tweeter, protected by a Polypropylene transparent cover acting as light diffuser. Using the optional HM RGB 1 BK you can change the LED color to suit your mood or craft.

HMX HIGH OUTPUT WOOFER

HMX woofers provide outstanding output, ensured through the use of an oversized motor optimized with FEM simulation (Finite Element Modeling) for the best magnetic flux/dimension ratio. The generous 25 mm (1") voice coil provides optimal control at high excursion minimizing intermodulation distortion and dynamic compression. To neutralize water, dust and mud, Hertz Marine and Powersports speakers feature a UV-resistant polypropylene cone co-molded with Santoprene rubber surround and a grille injected with a Hi-temperature and UV resistant polymer.

HMX 36mm (1.4") TWEETER

The HMX tweeters feature an acoustic lens optimized for best off-axis dispersion and maximized SPL. The attractive stainless steel tweeter mesh grille provides perfect high-frequency transfer and a rock-solid protection.



HMX 6.5

Hi-performance 6.5" Marine coaxial speakers

HMX 6.5-LD

Hi-performance 6.5" Marine coaxial speakers with RGB LEDs lighting



HMX 8

Hi-performance 8" Marine coaxial speakers



HMX 6.5 S

Hi-performance 6.5" Powersports coaxial speakers

HMX 6.5 S-LD

Hi-performance 6.5" Powersports coaxial speakers with RGB LEDs lighting



HMX 8 S

Hi-performance 8" Powersports coaxial speakers

HMX 8 S-LD

Hi-performance 8" Powersports coaxial speakers with RGB LEDs lighting

HM RGB 1 BK

Remote control



HM RGB 1 BK is composed by an RGB CONTROLLER specifically developed for HMX LD option models including a radio frequency remote control with a wide array of functionalities ranging from the selection of the color better matching your boat/ ATV/motorcycle to the creation of a lighting game reacting to music tempo.

COAX specifications	Size mm (in.)		Power Hand. W		Imp. Ω	Freq. Resp. Hz	Sens. dB/SPL	Magnet WF/TW	Woofer Cone / Tweeter Dome
	Woofer	Tweeter	Peak	Cont.					
HMX 6.5 (S/LD)	165 (6.5)	36 (1.4)	150	75	4	50 - 25 K	89	High density flux ferrite / Neodymium	Polypropylene / PEI
HMX 8 (S/LD)	200 (8)	36 (1.4)	200	100	4	45 - 25 K	91		



HCP marine amplifiers feature a compact design ready to face the open water environment, providing tons of clean power. The complete crossover filters with variable frequency and the bridge operation mode improve application versatility for the design of active systems in your boat.

CROSSOVER FILTERS FOR AN EASY SETUP
EXTRUDED ALUMINIUM HEATSINK TO ENSURE OPTIMAL HEAT TRANSFER
BALANCED INPUT CIRCUIT TO REJECT ANY NOISE
BASS BOOST TO GAIN PUNCH FROM THE SPEAKERS

HCP 2MX

Amplifier



marine

HCP 4M

Amplifier



AMP specifications			HCP 2MX	HCP 4M
Channel Mode			2 - 1	4 - 3 - 2
Output Power (RMS) @ 14.4 VDC	@ 4Ω	W x ch	120 x 2	65 x 4
	@ 2Ω	W x ch	200 x 2	95 x 4
	@ 4Ω	W x ch (3 ch)	-	65 x 2 + 190 x 1
	@ 2Ω + 4Ω	W x ch (3 ch)	-	95 x 2 + 190 x 1
	@ 4Ω + 2Ω	W x ch (3 ch)	-	-
	@ 4Ω	W x ch (2 ch)	-	190 x 2
Filters	@ 4Ω	W x ch (mono)	400 x 1	-
	Bypass		Yes	Yes
	Hi-Pass	Hz @ dB/Oct.	50 ÷ 3,2k @ 12	A/B: 80 @ 12
Boost	Lo-Pass	Hz @ dB/Oct.	50 ÷ 3,2k @ 12	A/B: 50 ÷ 500 @ 12
	dB	gain @ 50 Hz	off / +3 / +6 dB	off / +6 / +12 dB
Pre-Out	Bypass		Yes	Yes
	Hi-Pass		50 ÷ 3,2k @ 12	-
Distortion - THD	100 Hz @ 4Ω	%	0,03	0,01
S/N Ratio	Sensitivity @ 1 V RMS	dBA	105	103
Damping factor	100 Hz @ 4Ω		300	120
Size W x D x H		mm	315 x 190 x 50	315 x 190 x 50
		in.	12.40 x 7.48 x 1.97	12.40 x 7.48 x 1.97

Thanks to the ultra-compact cast-aluminium chassis (IPX 64 rated), the HMP amplifiers are nature-proof, being the ideal choice for UTV/ATV/motorcycle installations. Available in mono (HMP 1D) and four channel (HMP 4D) versions, they feature an incredible power/size ratio and an easy setup thanks to the integrated crossover filter.



CROSSOVER FILTERS FOR AN EASY SETUP

REMOTE CONTROL FOR SUBWOOFER LEVEL (ONLY HMP 1D) PROVIDED

BALANCED INPUT CIRCUIT TO REJECT ANY NOISE

BASS BOOST FUNCTION TO GAIN PUNCH FROM THE SPEAKERS

HMP 1D

Amplifier



PowerSports

HMP 4D

Amplifier



HRC BM
(Hertz Remote Control Bass Management)
provided with HMP 1D.



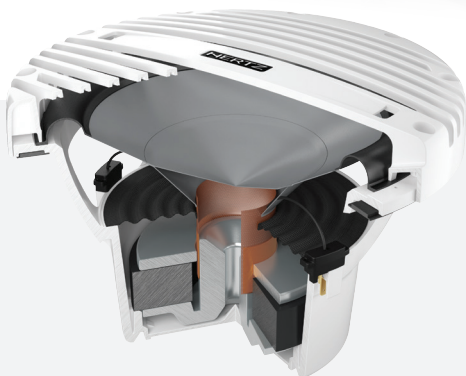
Nature-proof
connection cable
included.

AMP specifications

			HMP 1D	HMP 4D
Channel Mode			1	4 - 2
Output Power (RMS) @ 14.4 VDC	@ 4Ω	W x ch	180 x 1	60 x 4
	@ 2Ω	W x ch	300 x 1	75 x 4
	@ 4Ω	W x ch (2 ch)	-	150 x 2
Filters	Bypass		yes	yes
	Hi-Pass	Hz @ dB/Oct.	-	65 / 85 / 115 @ 12
	Lo-Pass	Hz @ dB/Oct.	65 / 85 / 115 @ 12	65 / 85 / 115 @ 12
Subsonic	Hi-Pass	Hz @ dB/Oct.	off / 22 / 32 @ 12	-
Boost	dB	gain @ 45 Hz	off / +6 / +9 dB	-
HRC BM (Hertz Remote Control Bass Management)		(-50 ÷ 6) dB	Yes	-
Distortion - THD	100 Hz @ 4Ω	%	0,1	0,2
S/N Ratio	Sensitivity @ 1 V RMS	dBA	105	95
Damping factor	1 kHz @ 4Ω		300	45
Size W x D x H		mm	223 x 100.5 x 43.6	223 x 100.5 x 43.6
		in.	8.77 x 3.95 x 1.71	8.77 x 3.95 x 1.71

marine

The HMS 10 B long throw 10" subwoofer relieves the main speakers from the hard work of reproducing the lowest frequency range, adding bass output and punch to maximize the overall system performance.



marine

HMS 10 B
Subwoofer

Engineered and tested for the real environment of application (UV, salt-fog, vibrations, water spray, thermal shock, dust).

Long-throw 50mm (2") voice coil woofer engineered for infinite baffle application featuring polypropylene cone injected with UV inhibitors and co-molded Santoprene surround.

Progressive-design aramid fiber spider with silicone-insulated lead wires ensuring durability and constant performance over time.

FEM optimized high-excursion mobile equipment driven by a massive magnetic group encapsulated into a marine-grade polymer injected basket.

Gold-plated corrosion resistant brass connection terminals with a silicone cap protecting leadwire junction point.



SUB specifications	Size mm (in.)	Power Handling W		Imp. Ω	Sensitivity dB/SPL	Application	Magnet	Cone
		Peak	Cont. program					
HMS 10 B	250 (10)	500	250	4	88	Infinite baffle	Ferrite	Pressed-pulp cone with cotton fibres



HERTZ

90131170



The Sound Experience

www.hertzaudiovideo.com



YOUR LOCAL HERTZ RETAILER IS:

JANUARY 2017

All Specifications Subject to Change Without Notice



www.hertzaudiovideo.com

HERTZ

PART OF **ELETTROMEDIA** - 62018 Potenza Picena (MC) Italy - T +39 0733 870 870 - F +39 0733 870 880 - www.elettromedia.it